

**gizir**<sup>®</sup>  
WOOD PRODUCTS

# WALL PROFILES



# WALL PROFILES & LED WALL PROFILES

MDF - Matt & Super Matt

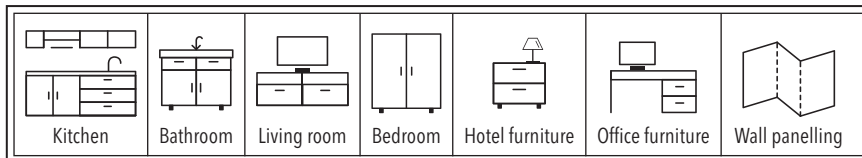
## Why choose Gizir WALL PROFILES ?

Catering to a variety of aesthetic preferences, Gizir Wall Profiles can be produced in matte and super matte finishes. Customization can be taken a step further by the application of paintable pp foil on the surface of the profiles to achieve the desired color.

Shaped with laser sharp precision, using the world's most advanced profile production machinery at Gizir Facilities, each profile is carefully laminated, ensuring the quality and the creation of unique and distinguished designs.

**\*LED strips can be ordered seperately.**

## Where to use?



Easy to clean



Antibacterial

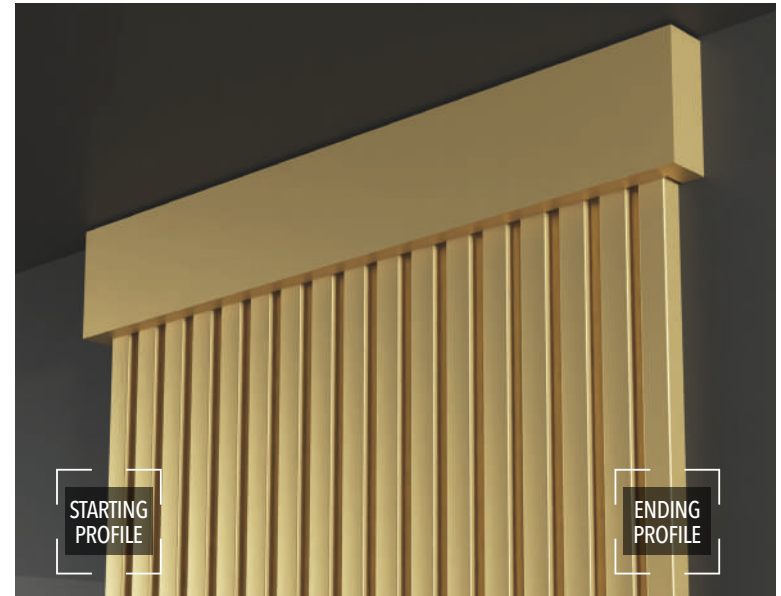


PVC-coated

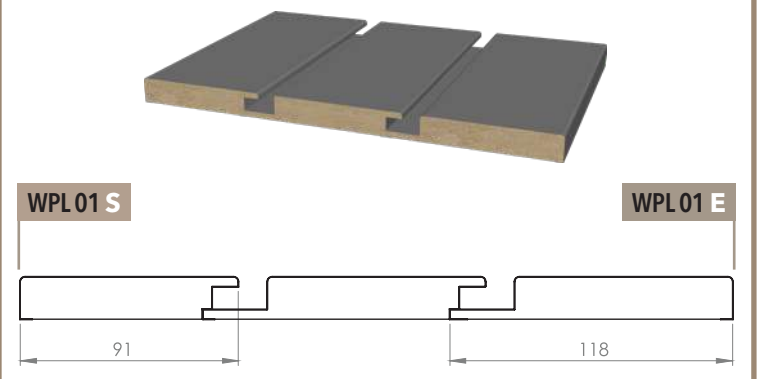


Excellent soft touch surface

DIMENSIONS (mm)	
Thickness	17,7 WP18: 7,7
Length	2800
Width	118 WPO9: 145 WP18: 151



## STARTING & ENDING WALL PROFILES

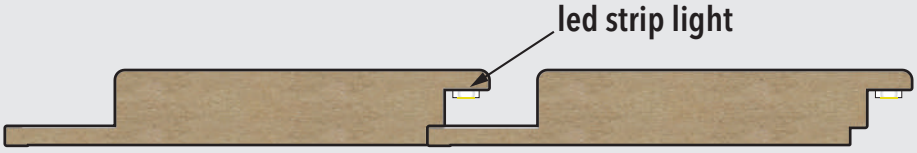


**LED WALL PROFILE** | **WPL01**  
SM MINK | S027



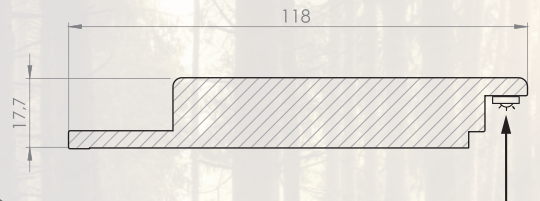
\*Colors may vary, ask for samples.

**MOUNTED PROFILE**

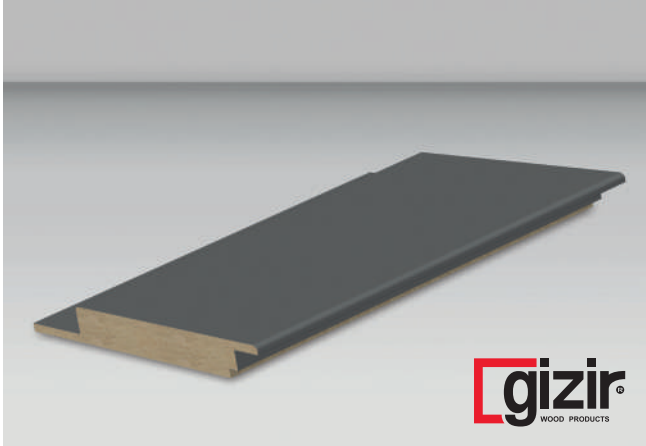


**DIMENSIONS (mm)**

Thickness: 17,7 | Width: 118 | Length: 2800



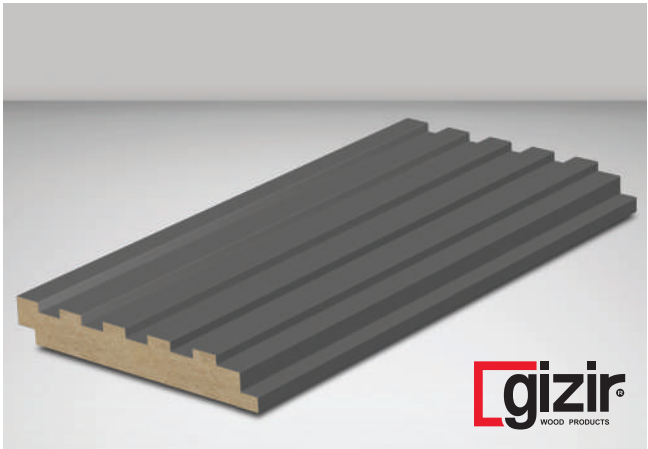
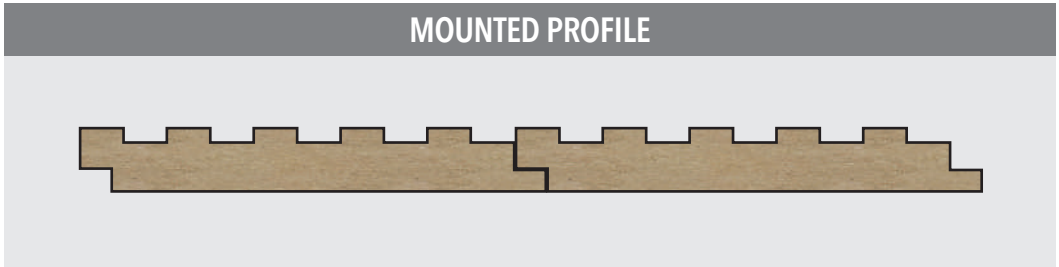
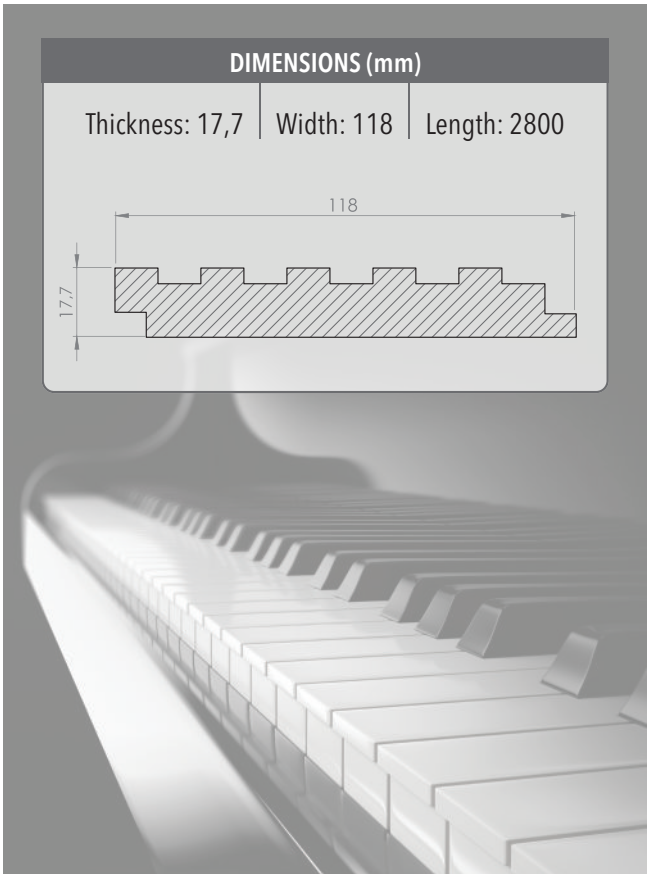
led strip light



New



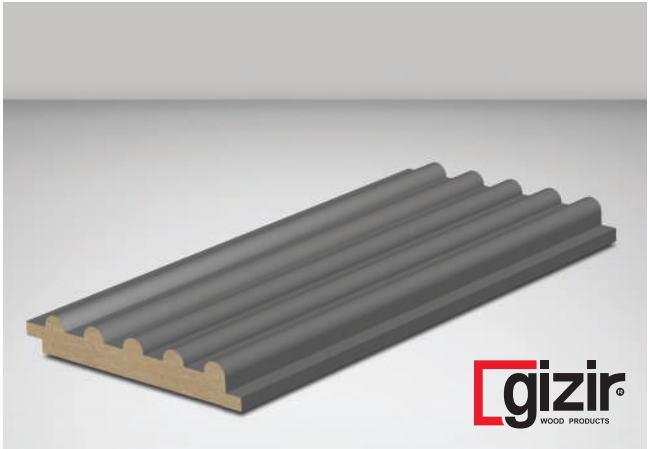
\*Colors may vary, ask for samples.



WALL  
PROFILE | **WP 02**  
SM DARK GREY | S036



\*Colors may vary, ask for samples.

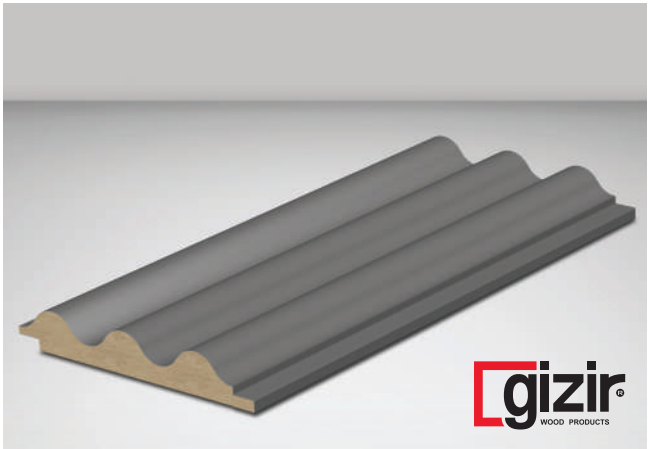
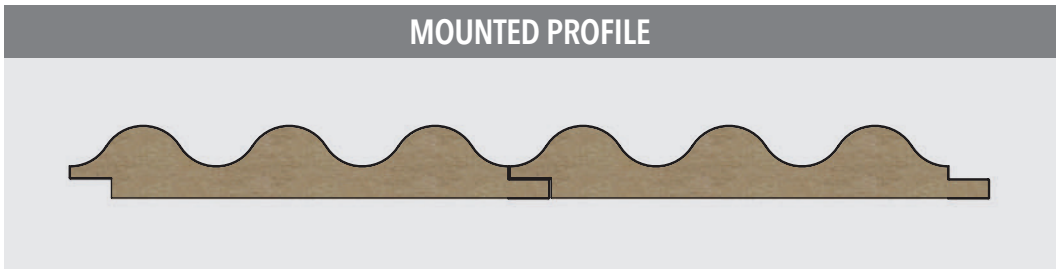
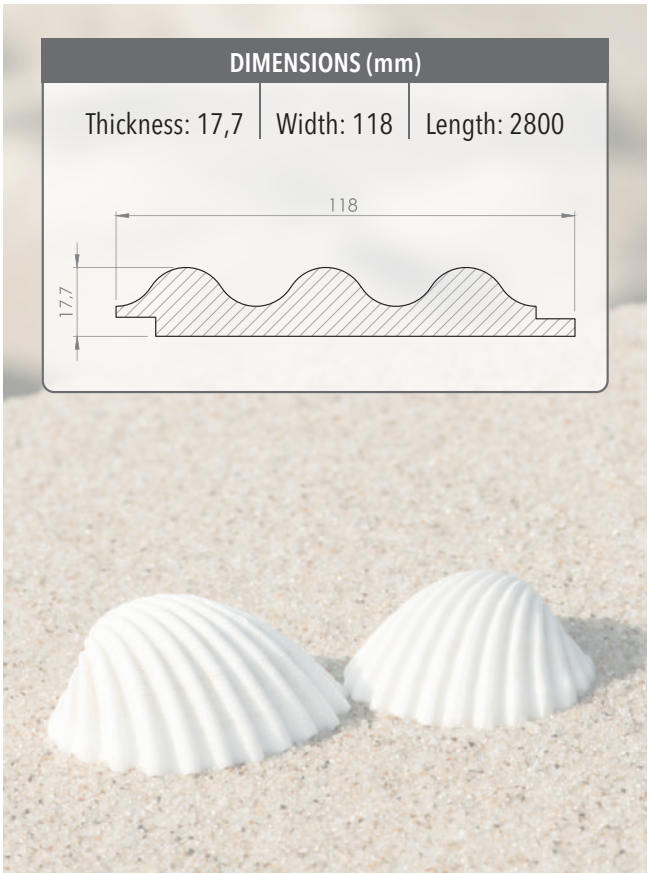


**MOUNTED PROFILE**



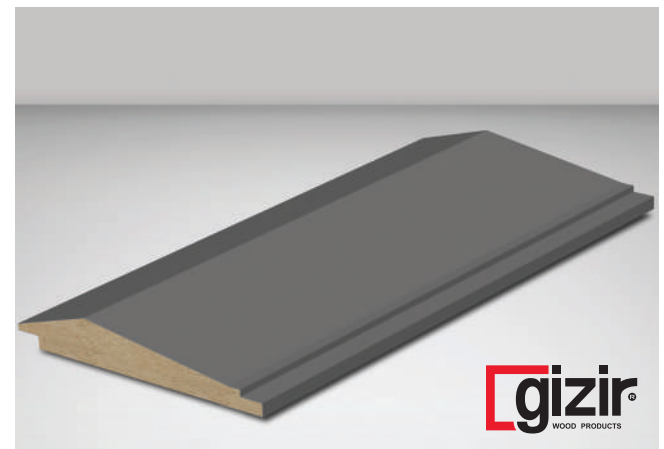
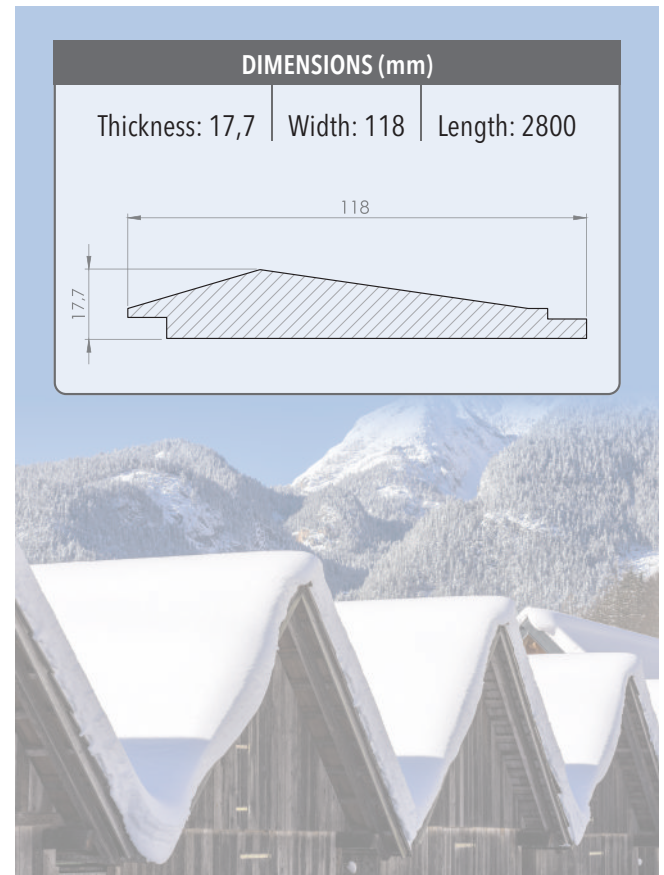
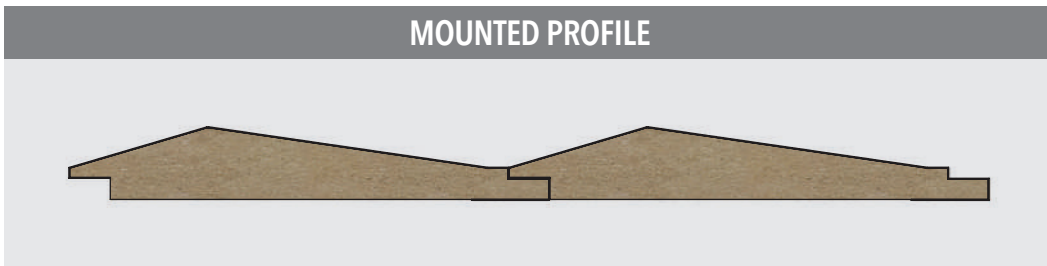


\*Colors may vary, ask for samples.



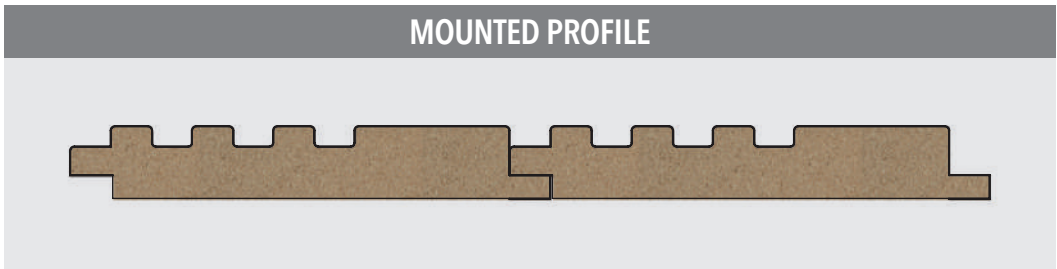
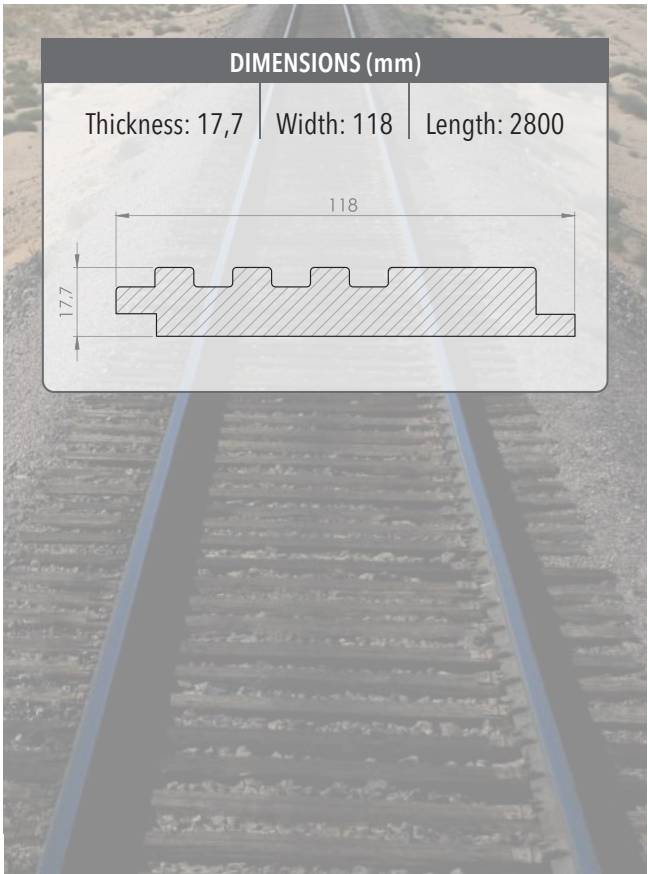


\*Colors may vary, ask for samples.





\*Colors may vary, ask for samples.



WALL  
PROFILE | **WP 07**  
SM MINK | S027



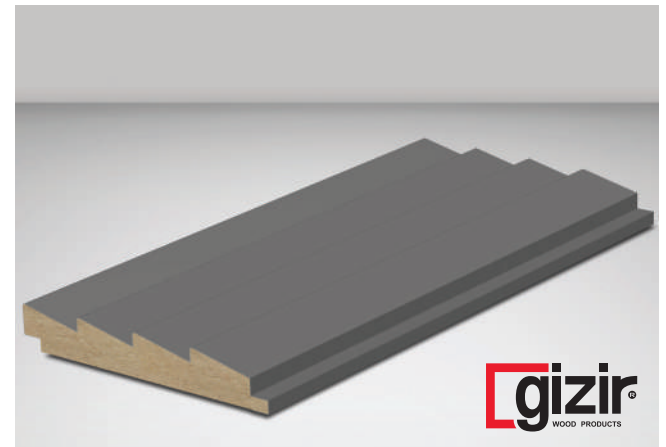
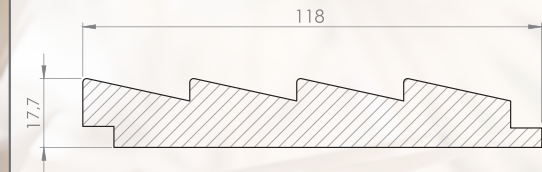
\*Colors may vary, ask for samples.

### MOUNTED PROFILE



### DIMENSIONS (mm)

Thickness: 17,7 | Width: 118 | Length: 2800



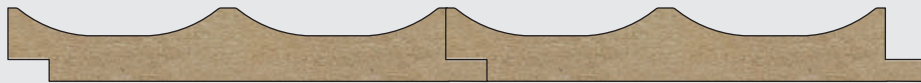
**gizir**  
WOOD PRODUCTS

WALL  
PROFILE | **WP 08**  
SM.WHITE | S010



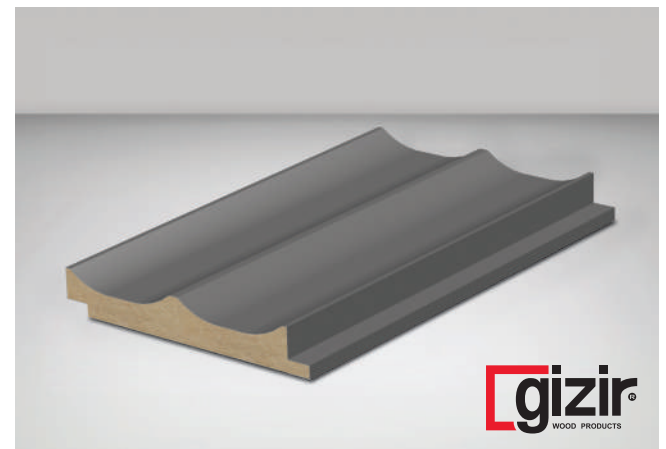
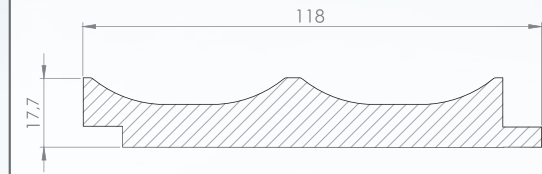
\*Colors may vary, ask for samples.

### MOUNTED PROFILE



### DIMENSIONS (mm)

Thickness: 17,7 | Width: 118 | Length: 2800



**gizir**  
WOOD PRODUCTS

WALL  
PROFILE | **WP 09**  
P. TEAK | A360



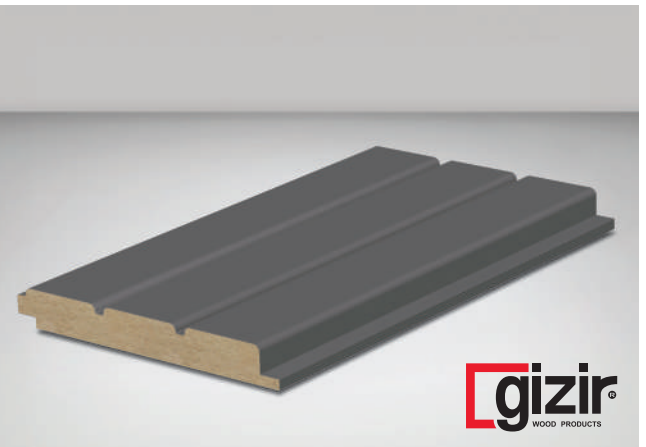
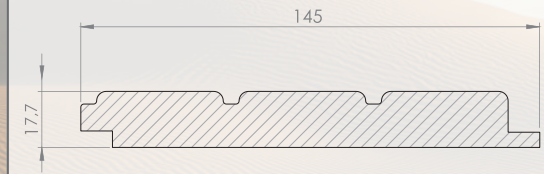
\*Colors may vary, ask for samples.

### MOUNTED PROFILE



### DIMENSIONS (mm)

Thickness: 17,7 | Width: 145 | Length: 2800



**gizir**  
WOOD PRODUCTS

WALL  
PROFILE | **WP 11**  
SM MINK | S027



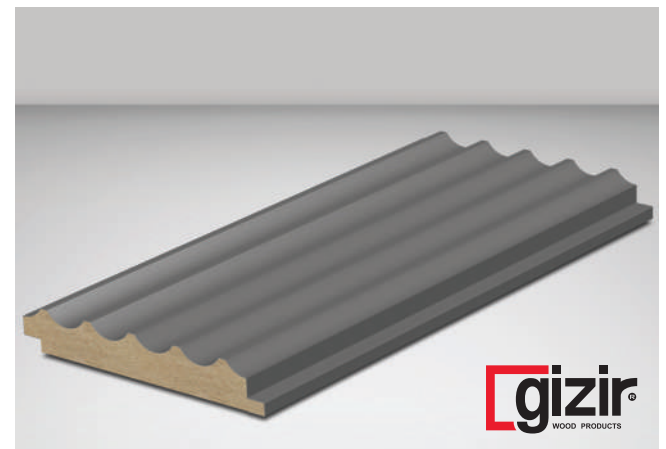
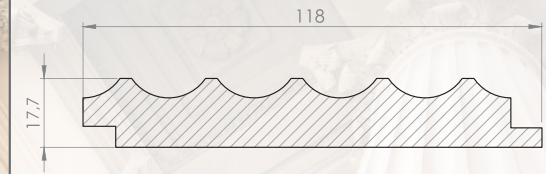
\*Colors may vary, ask for samples.

### MOUNTED PROFILE



### DIMENSIONS (mm)

Thickness: 17,7 | Width: 118 | Length: 2800



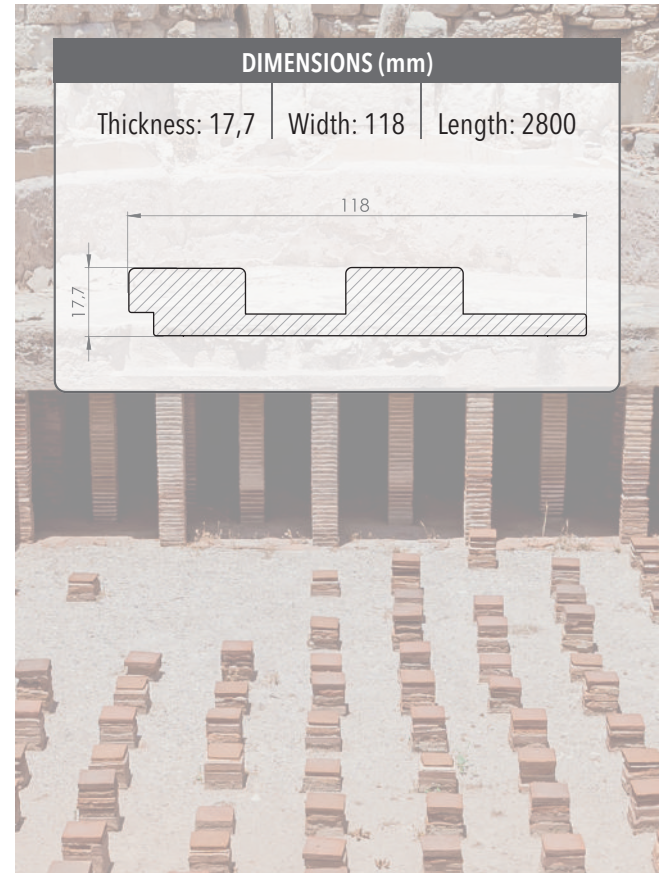
**gizir**  
WOOD PRODUCTS

WALL  
PROFILE | **WP 12**  
P.TEAK | A360



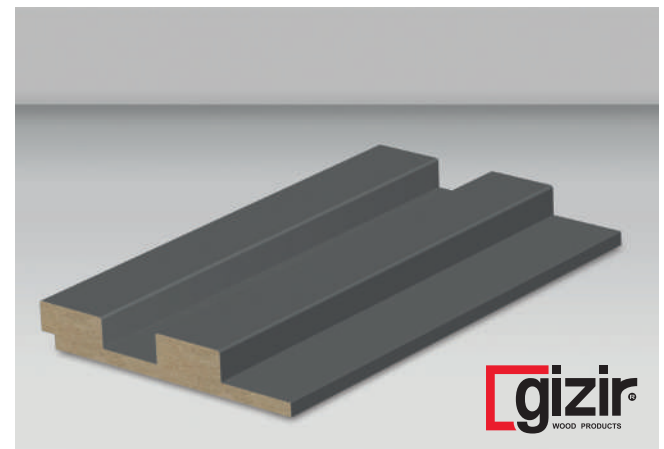
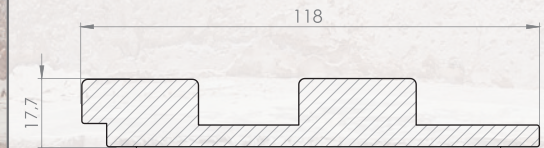
\*Colors may vary, ask for samples.

### MOUNTED PROFILE



### DIMENSIONS (mm)

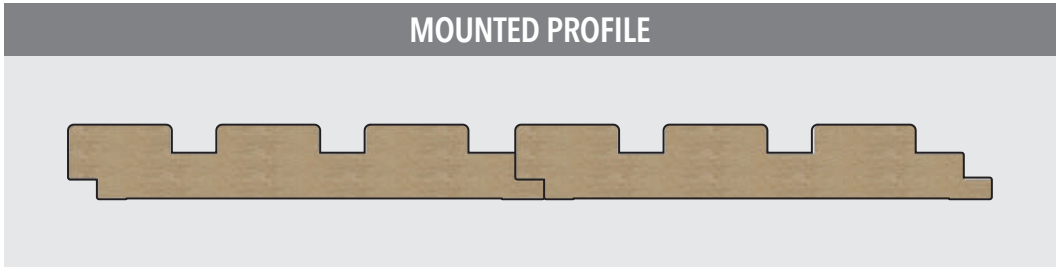
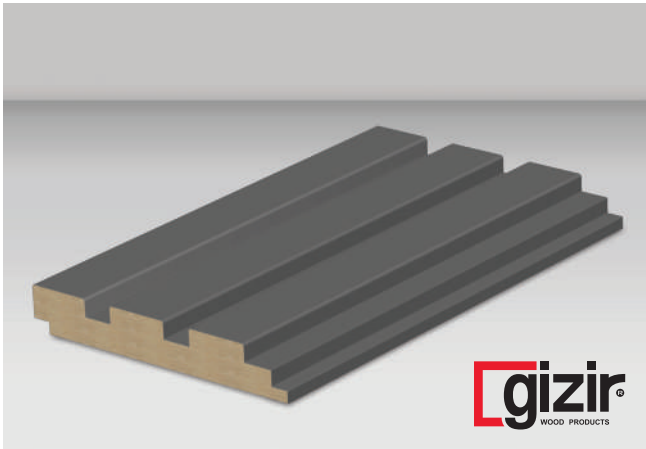
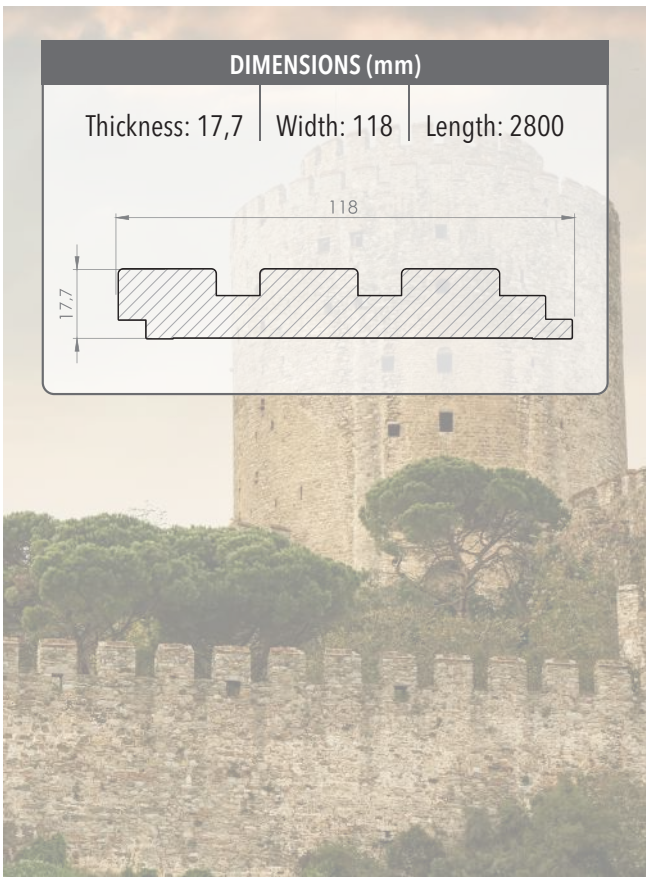
Thickness: 17,7 | Width: 118 | Length: 2800

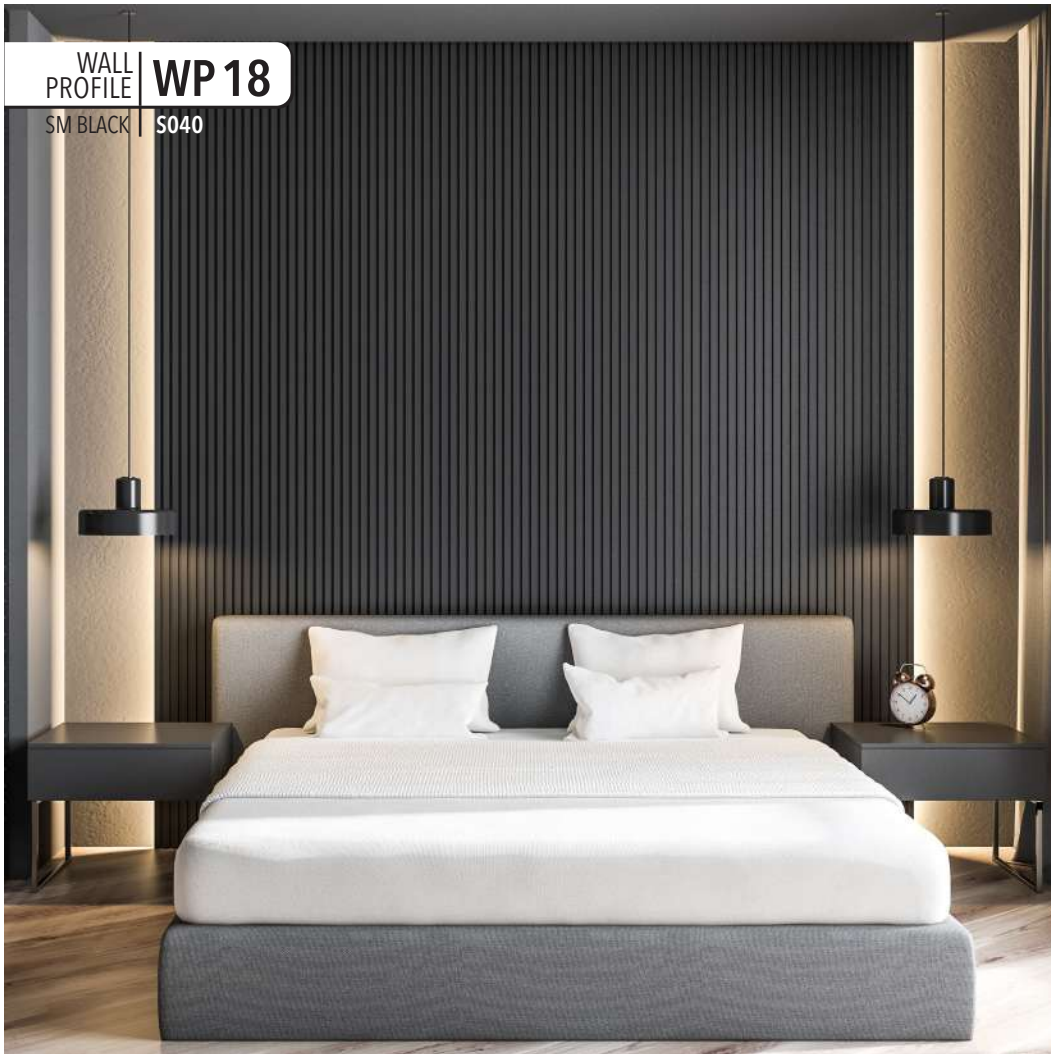


**gizir**  
WOOD PRODUCTS



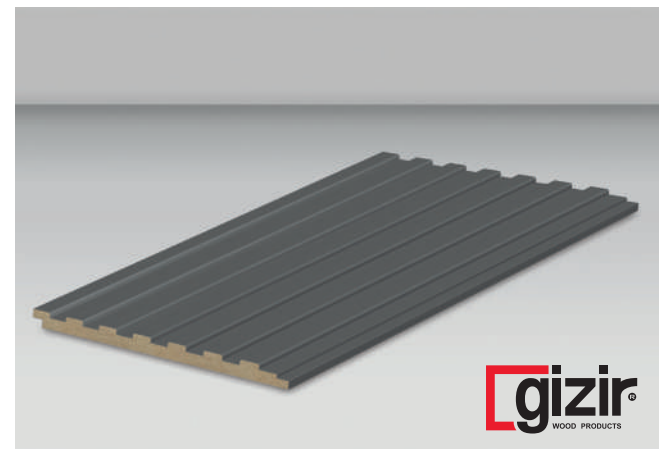
\*Colors may vary, ask for samples.





\*Colors may vary, ask for samples.

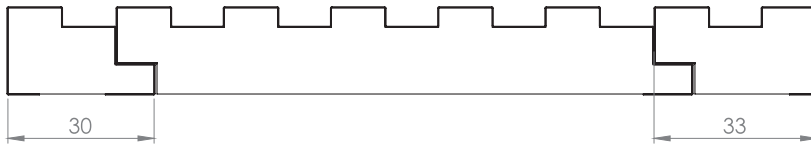
### MOUNTED PROFILE



# STARTING & ENDING WALL PROFILES

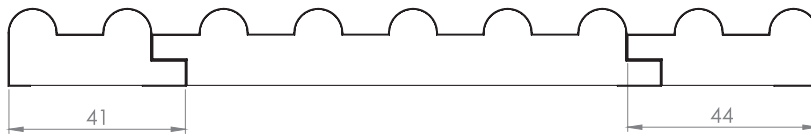
WP 01 S

WP 01 E



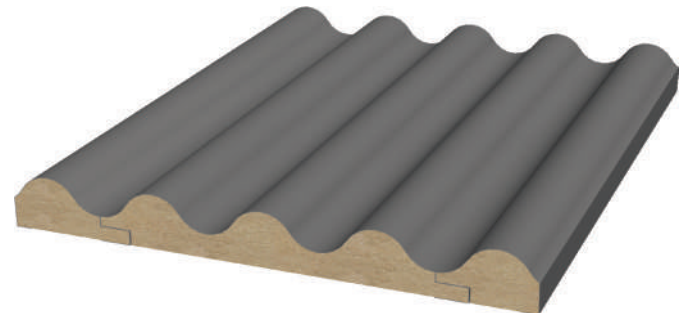
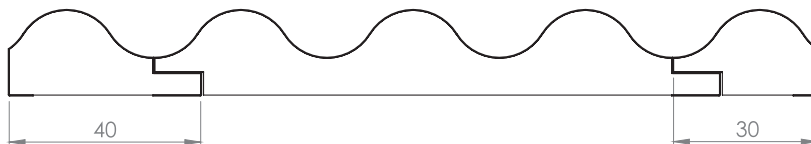
WP 02 S

WP 02 E



WP 04 S

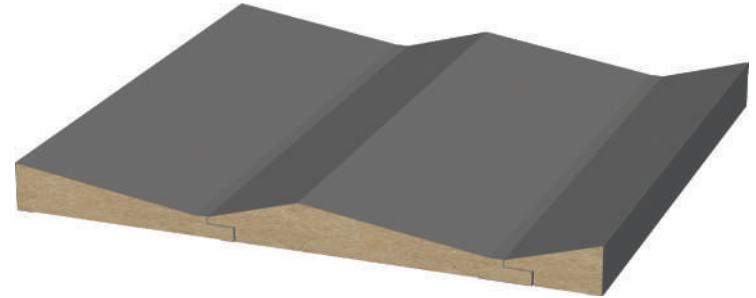
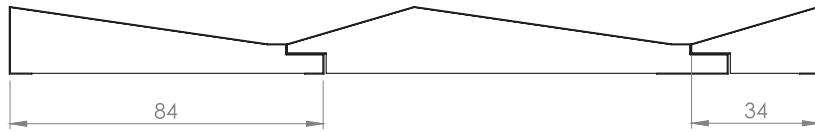
WP 04 E



# STARTING & ENDING WALL PROFILES

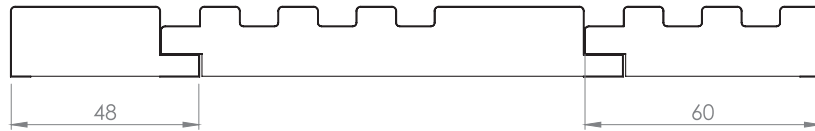
WP 05 S

WP 05 E



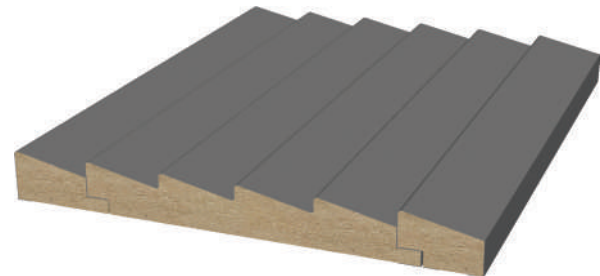
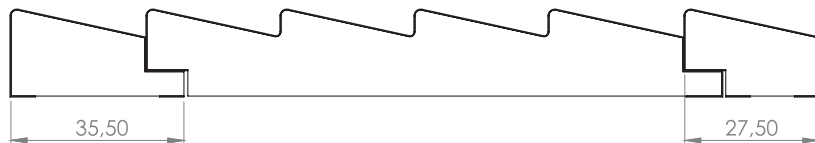
WP 06 S

WP 06 E



WP 07 S

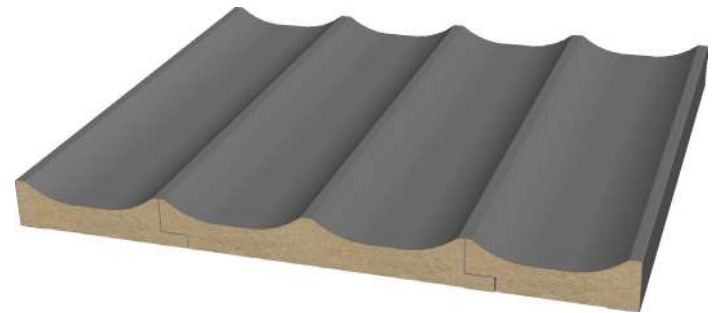
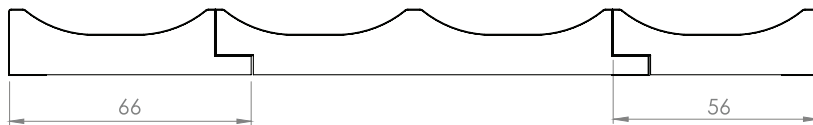
WP 07 E



## STARTING & ENDING WALL PROFILES

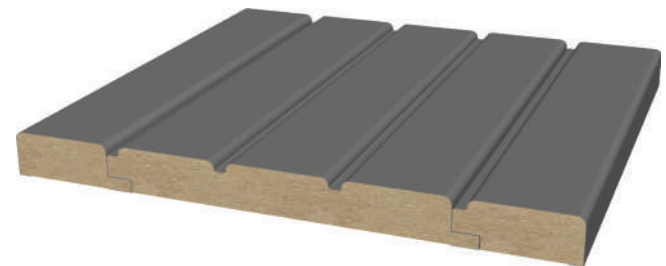
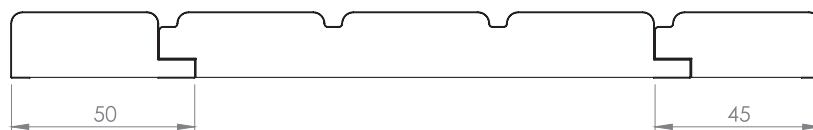
WP 08 S

WP 08 E



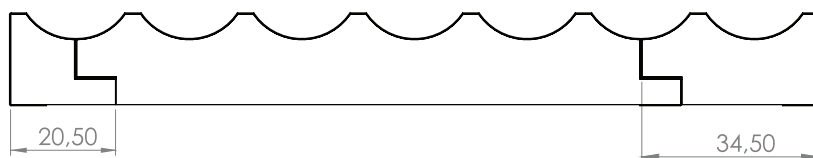
WP 09 S

WP 09 E



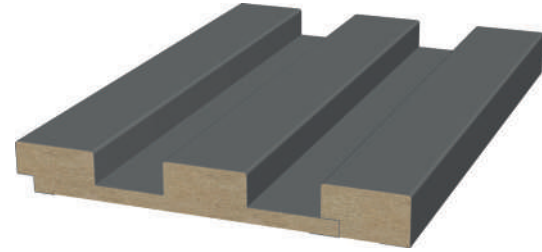
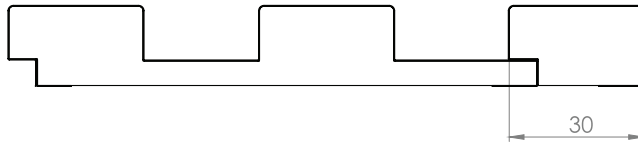
WP 11 S

WP 11 E

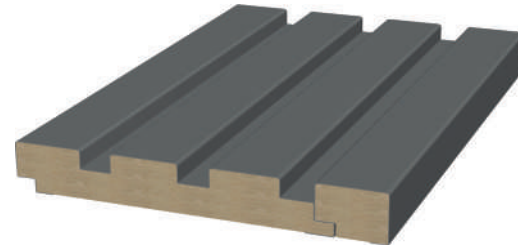
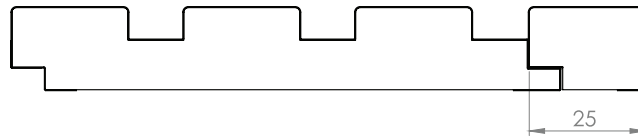


# STARTING & ENDING WALL PROFILES

WP 12 E

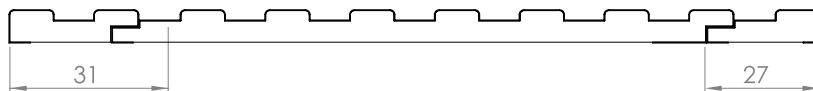


WP 13 E



WP 18 S

WP 18 E



# TECHNICAL INFORMATIONS

NO	FEATURE	UNIT	VALUE	STANDARD
1	Gloss level (60° angle)	Gloss	3-8GU	EN 14323
2	Scratch resistance	H	H-2H	TS 7385
3	Width and Length tolerance	mm / m	± 0,2 mm , maximum ± 0,5 mm	EN 324-1 EN 622-1
4	Assessment of surface resistance to wet heat (85°C)	Class	5 (No change)	EN 12721+A1:2014:02
5	Assessment of surface resistance to dry heat (70°C)	Class	5 (No change)	EN 12722+A1:2014:02
6	Behavior towards impact loading by falling steel ball	mm	No cracking	EN 14323:2021-12 6.13
7	Test of water steam resistance	Class	5 (No change)	EN 14323:2021-12 6.10
8	Resistance to staining	Class	5 (No change)	EN 14323 6.6
9	Assessment of surface resistance to chemical cold liquids (Acetic acid, acetone, ammonia solution, citric acid, cleaning agent, etc.)	Class	5 (No change)	EN 12720:2009+A1
10	Colorfastness to light	Grey scala	5. Grade	EN 15187
11	Surface soundness (tensile strength) (*)	MPa	1 N / mm <sup>2</sup>	EN 311
12	Tensile strength vertical to the surface(*)	N / mm <sup>2</sup>	0,50 N/mm <sup>2</sup>	EN 319
13	Thickness tolerance	mm	7,7,12,16,18 mm± 0,20 mm 22,25,30 mm± 0,30 mm	EN 324-1 EN 622-1
14	Densty tolerance	Kg / m <sup>3</sup>	7,7,12,16,18 mm± 750 7% 22,25,30 mm ± 720 7%	EN 323

(\*) These values are weighted average of the test results.



gizir.com  
info@gizir.com

**İSTANBUL**  
Export office & Showroom  
Barbaros Mah. Begonya Sok.  
Nidakule Ataşehir Kuzey Sit.  
No: 3/70 Ataşehir / İstanbul  
T: +90 (216) 519 33 73

**ADANA**  
Headquarters  
Organize Sanayi Bölgesi,  
Çanakkale Cad. No:17  
01350 Sarıçam / Adana  
T: +90 (322) 394 43 40 (pbx)